

COORDINATION



PTP Overview

- Program Requirement for 5310 Funds
- Requirement for PTP introduced in SAFETEA-LU
- Requirement held for MAP-21
- Lefllover 3ARC and New 5300s still covered under this requirement

TAG Meetings

- What about our TAG?
- What is a TAG?
- Structure and Representation

Common Difficulties

- Lack of communication
- Lack of resources
- Lack of information
- Lack of coordination

Assessing Center Analysis

- What is an ACA?
- How is it used?
- What are the benefits?
- What are the challenges?

Best Practices

- Examples of best practices
- Key takeaways

Questions?

Coordination Issues (Analysis)

Issues to be addressed:

- Lack of communication
- Lack of resources
- Lack of information
- Lack of coordination

Integration and Monitoring

- Key takeaways
- Examples of best practices

5310 NOTATION

Programs may be specifically listed in the 5310 NOTATION section of the SAFETEA-LU statute. The programs listed in the 5310 NOTATION section are:

- 5310-001
- 5310-002
- 5310-003
- 5310-004
- 5310-005
- 5310-006
- 5310-007
- 5310-008
- 5310-009
- 5310-010

5310-001

5310-001-001

- 5310-001-001-001
- 5310-001-001-002
- 5310-001-001-003
- 5310-001-001-004
- 5310-001-001-005
- 5310-001-001-006
- 5310-001-001-007
- 5310-001-001-008
- 5310-001-001-009
- 5310-001-001-010

PTP Overview

- Program requirement for 5310 funds
- Requirement for PTP introduced in SAFETEA-LU
- Requirement held for MAP-21
- Leftover JARC and New Freedom still covered under this requirement



PTP Overview

- 5310 projects need to be included in a plan that:
 - is locally developed
 - includes coordinated public-transit and human service transportation
 - includes participation by seniors and individuals with disabilities
 - includes participation by public, nonprofit and human service transportation providers and other members of the public

Why is this important?

- These conversations generate important projects.
 - NICE Bus
 - Medical shuttles
 - Refugee Access
- These programs and services directly impact people's lives.
 - Transportation to medical
 - Transportation to work
 - Transportation to school
 - Transportation to quality of life activities

Common Difficulties

- TAG Meetings
- ADA Accessibility
- Activity Center Analysis
- Funding
- 5310 Notation

TAG Meetings

- What input did you receive?
- Who attended?
- Diverse and Representative interests



ADA Accessible Vehicles

- Important for coordination

- Transportation Provider Survey

- Contact schools directly

- Start with Transportation Managers



Muscatine Community School District

3900 Mulberry Ave., Muscatine, IA 52761 • P (563) 263-7223 / F (563) 263-7729 • Superintendent: Dr. Jerry Riibe

- Innovation at MCSO
- District Info
- Departments & Programs
- For Parents & Students
- Community Involvement
- News & Alerts

YOU ARE HERE: [HOME](#) > [DEPARTMENTS & PROGRAMS](#) > [TRANSPORTATION](#)

Transportation

Director info: Walter Crowder, Director of Operational Services

The Transportation Center is located at 2714 North Isett Avenue in Muscatine, Iowa or just off of the Isett Ave. and Highway 61 Bypass intersection.



Yearly we travel over 360,000 miles transporting approximately 2,800 children to and from school each day. Add to that the 1200 or so activity and field trips that brings our yearly mileage total to over 420,000.

The Transportation Center is also responsible for the districts activity vans. These vans are used by district personnel for various travel needs. These vans travel well over 50,000 miles each year.

Transportation Center
 2714 N Isett Ave
 Muscatine, IA 52761
 563-263-7288 (v)
 563-263-4511 (f)

Transportation Department Staff			
Donald Krings	Head Transportation Supervisor	dmkrings@muscatineschools.org	563-263-7288 x102
Lori Dusenberry	Transportation Supervisor	ladusenb@muscatineschools.org	x105
Joyce Reed	Clerk	jareed@muscatineschools.org	x112
TBA	Clerk		
Kevin Lange	Head Bus Mechanic	klange@muscatineschools.org	x110
Pete Horchem	Bus Mechanic	rwhorche@muscatineschools.org	x110

- ### Forms
- [2012-2013 Transportation Request Form \(PDF\)](#)
 - [2012-2013 Transportation Request Form \(DOC\)](#)
 - [PreK Transportation Request Form](#)

- ### More Pages in This Section
- Finance
 - Human Resources
 - Innovation & Instruction
 - Operational Services
 - Services
 - Special Programs
 - Transportation**
 - District Boundaries
 - Bus Discipline Policy
 - Technology

Feedback

AREA Profile

- **Demographics**
 - Individuals with disabilities
 - Older Adults (Over 65)
 - Population/Growth
 - LEP
 - Minority populations
 - Low Income/Poverty
 - Employment
- **Additional Demographics**
 - Households without a vehicle
 - Housing as a percentage of income (30%)
 - Location Affordability Index:

<http://www.locationaffordability.info/>

Activity Center Analysis

- Should include facilities that are necessary to quality of life
 - Banks
 - Hospitals
 - Grocery stores
 - Employment centers
 - Health care facilities
 - Social service facilities
- Not just about the places already served by passenger transportation (Transit routes), but also those that are not currently served
- Maps should indicate where services are located and don't need to be GIS generated



Funding Sections

- "Certify that to the maximum extent feasible, services funded under Section 5310 are coordinated with transportation services assisted by other federal departments and agencies" *and..*
- "a coordinated plan should incorporate activities offered under other programs sponsored by federal, state, and local agencies to greatly strengthen its impact."
- Should include more than just traditional funding sources (FTA, State/OPT, Passenger fares)
- Could include:
 - Department on Aging
 - Local Foundations
 - County Health Departments
 - United Way
 - DHS
 - Medicaid



Best Practices

CY2014 (FY 2015-2019)
Passenger Transportation Plans

TAG Meetings and Process

Ames

- Two forums, Story County Human Services Council and Transportation Collaboration.
- Uses both groups for input to PTP and transportation needs in general
(26 Meetings/Tasks in 1 year)
- Also uses network gained for letters of support, coordinating and developing projects, and implementation of efforts.

TAG Meetings and Process

MAPA

- Sub committee (CTC) of the technical advisory group.
- CTC reviews scoring on 5310 projects and determines how they are to be programmed.
- The CTC is made up of health and human service agencies, private and not-for-profit providers, taxi companies, city officials, and Metro Transit.
- Meets monthly and develops/ guides PTP and 5310 project selection criteria.

TAG Meetings and Process

RPA 13 and 18

HSAC Transportation Committee

Chairperson: Susan Schwartz

Secretary: Molly Cummings

Minutes from June 20th, 2013

"The purpose of the HSAC Transportation Committee is to promote comprehensive and accessible transportation for all citizens of Council Bluffs."

Present: Susan Schwartz, American Red Cross, Dee Wentzel, Volunteer, Molly Cummings, WCCA, Marsha Grandick, Community Development, Stars Program, Janice Wright, Family Inc., Linda Burns, WIC, Matt Walsh, CB City Council/Chamber of Commerce.

I. Call to Order: Susan called the meeting to order at 8:35am.

II. Introductions/Announcements:

- Susan with American Red Cross stated that the chapter serves as a vendor for bus passes. People can purchase bus passes at their office. They are also the distribution center for Medicaid members who are approved to receive bus passes.

III. Unfinished Business:

- A. Car Purchase and Maintenance Project: The proposed date will be a Thursday in September. It will run an hour and a half, 5:30 to 7:00 p.m. is tentative time. Registration will be limited to 25 people. It is tentatively set to be at the American Red Cross garage on the Charles E. Lakin Human Services Campus. The fee will be \$5.00, upon approval from HSAC Board of Directors, with scholarships available. Money from registration will be used for either an emergency car kit or gas cards. This will be determined at a later date.

Assignments:

- Velma James will locate contact person at Iowa Western.
- Susan will contact the person at Iowa Western.
- Marsha will check the school calender
- Marsha will see to the flyers, advertising and contacting the local newspaper
- Matt will check to see if the Chamber would include a flyer in a mailing
- Molly will make contact with Broadway Methodist and Ministerial Association

IV. New Business

- A. Outline of Coordinated access to transportation and/or update in this regard. Matt Walsh will contact the former MAPA regarding Lee Myers' vacated position.

V. Other Business: None

VI. Next Meeting: August 15th, 2013 (No July meeting)

Adjournment: Meeting adjourned at 9:35am

Inventory

Des Moines MPO/CIRTPA

PROVIDER	TYPE OF SERVICE	ELIGIBILITY REQUIREMENT	HOURS OF SERVICE	DAYS OF SERVICE	TYPES OF VEHICLES	NUMBER OF VEHICLES	ADA STATUS OF FLEET
Iowa Bureau of Refugee Services	Demand responsive, curb-to-curb	Refugee	5:00 am to 1:00 am	Daily	Vans, cars	Flexible (can increase capacity as needed through short-term leases from state)	Not accessible
Iowa Department of Human Services - Warren County	Gas cards, bus passes/tokens	Must be going to DHS recommended service	Not applicable	Not applicable	Not applicable	Not applicable	Not applicable
Iowa New Choices	Bus passes/tokens	Low income	Not applicable	Not applicable	Not applicable	Not applicable	Not applicable
Jefferson Bus Lines	Intercity	-	Data not available	Data not available	Data not available	Data not available	Data not available
Joy Ride Transport	Demand responsive, door-to-door	-	6:00 am to 6:00 pm Monday through Friday, 8:00 am to 6:00 pm Saturday & Sunday	Daily	Minivans	23	Accessible
Knoxville Hospital & Clinics	Demand responsive	Patient	Not applicable	Not applicable	Not applicable	Not applicable	Not applicable
Legs on Lease	Demand responsive	-	6:00 am to 5:00 pm	Monday through Friday	Vans	3	Not accessible
Link Associates	Demand responsive, curb-to-curb	Disability	7:00 am to 5:00 pm	Monday through Friday	Buses, minivans, cars, trucks	40	14 accessible
Madison County Elderly Services	Demand responsive	Medical trip; access to work and school; essential shopping, personal, and business trips	Data not available	Data not available	Data not available	Data not available	Data not available
Madrid Home for the Aging	Demand responsive	Home resident	Data not available	Data not available	Data not available	Data not available	Data not available
Mainstream Living	Demand responsive	Disability, enrolled in program	Data not available	Data not available	Data not available	Data not available	Data not available
Majestic Limousine & Coach	Charter	-	As needed	As needed	Cars, SUVs, vans, limos	22	Larger vehicles accessible
Marion County Care Facility	Demand responsive	Facility resident	Data not available	Data not available	Data not available	Data not available	Data not available
Mary Greeley Medical Center	Bus passes/tokens	-	Not applicable	Not applicable	Not applicable	Not applicable	Not applicable
Mercy Medical Center	Demand responsive, bus passes/tokens	Medical trip	Varies by department	Varies by department	Vans, trucks, cars, ambulances	102	A few passenger vans
Midwest Ambucare	Demand responsive	Medical trip	Data not available	Data not available	Data not available	Data not available	Data not available
NAMI of Central Iowa	Mileage reimbursement	Disability	Not applicable	Not applicable	Not applicable	Not applicable	Not applicable
Old Market Limousine	Charter	-	As needed	As needed	Cars, buses	14	Not accessible
PACT Program	Demand responsive, mileage reimbursement	Patient	All	As needed	Data not available	Data not available	Data not available
Perry Health Care Center	Demand responsive, bus passes/tokens	Medical trip	After HIRTA hours	Weekends	Van	1	Accessible
Pleasant Care Living Center	Demand responsive	Home resident	As needed	As needed	Van	1	Accessible
Polk City Nursing and Rehab Center	Demand responsive	Client of center	As needed	As needed	Van	1	Accessible
Polk County Human Services	Bus passes/tokens	Age, disability, and income	Not applicable	Not applicable	Not applicable	Not applicable	Not applicable
Primary Health Care, Inc.	Demand responsive, bus passes/tokens	Homeless or no insurance	Data not available	Data not available	Data not available	Data not available	Data not available
Prime Towers	Demand responsive	Home resident	Data not available	Data not available	Data not available	Data not available	Data not available
Refugee Cooperative Services - Iowa Lutheran Services	Demand responsive	Refugee	Data not available	Data not available	Data not available	Data not available	Data not available

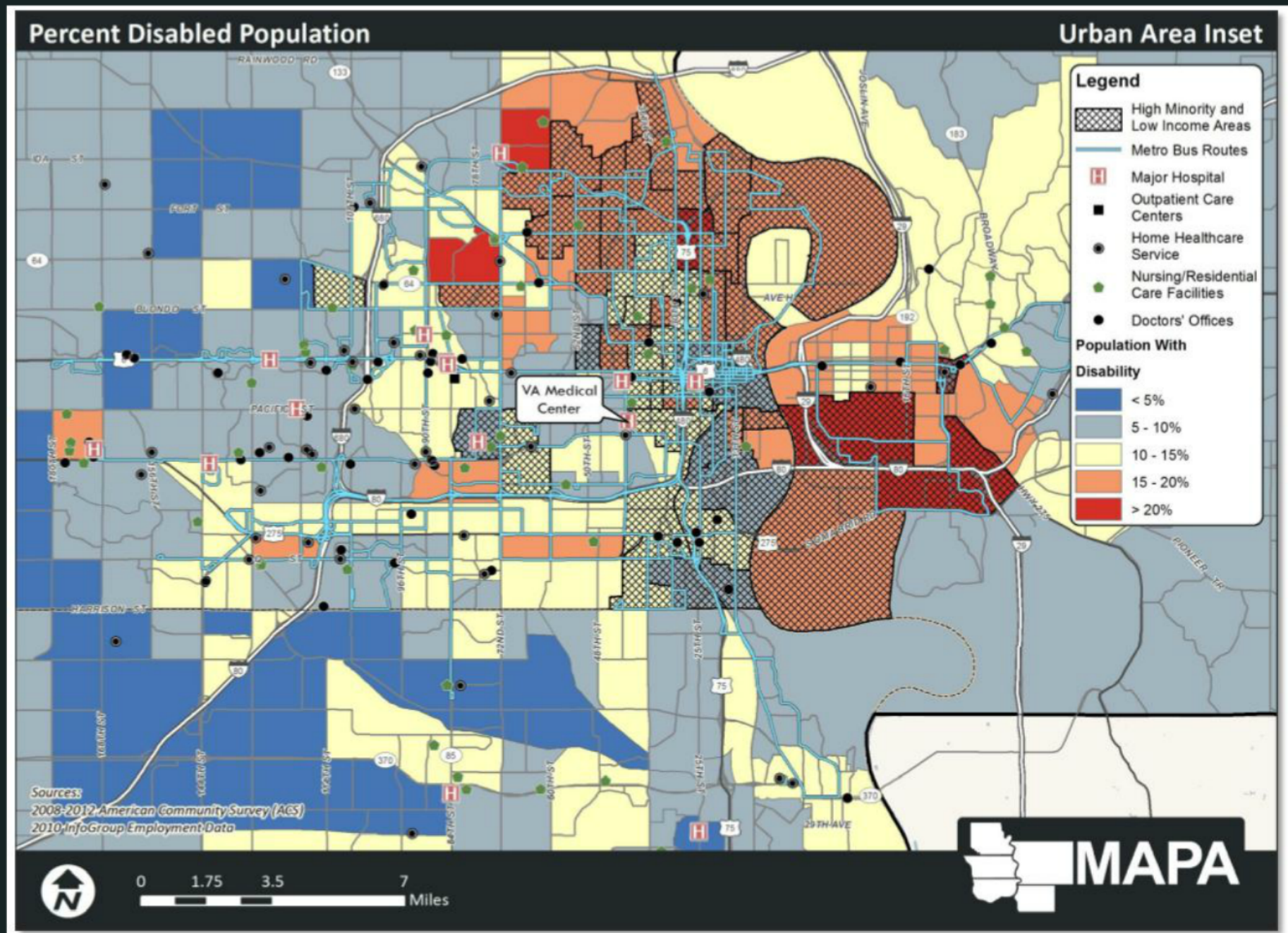
Inventory

Bi-State/RPA 9

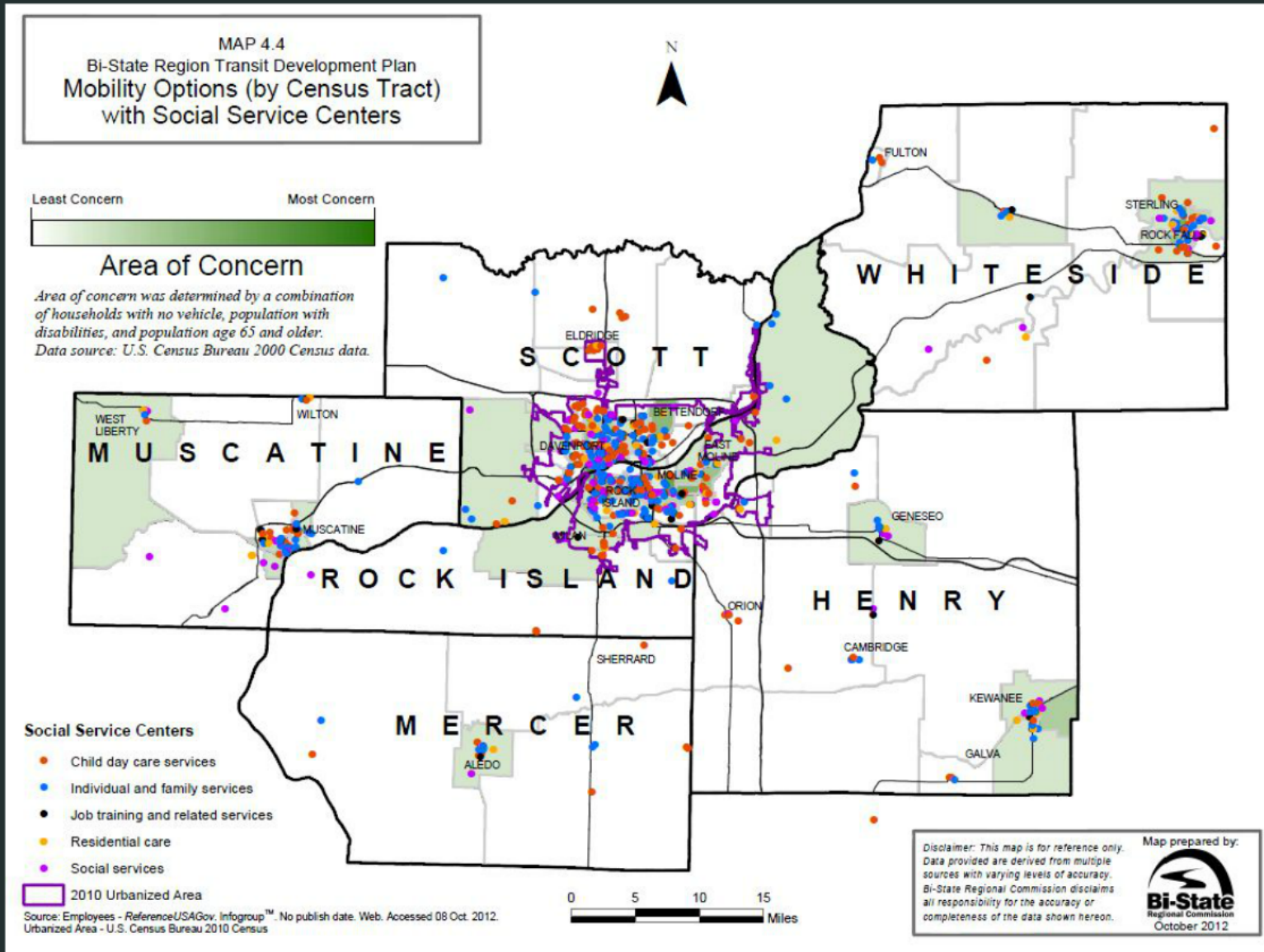
CANDLELIGHT SERVICES
CANDLELIGHT TRANSPORT SERVICES, INC.
3901 MARQUETTE STREET
DAVENPORT, IA 52806
(563) 391-8117
CONTACT: NATHAN KIMBROUGH

Sponsor:	N/A
Service Area:	Quad City Area and 25-30 miles in each direction. Will go on longer medical related trips.
Nature of Service/ Destination:	Recreation, medical and personal appointments (shopping, work, etc.), grocery store. Will accommodate needs..
Vehicles:	One Buick Regal sedan and seven (6 in each) vans (one lift equipped).
Principal Clients:	Seniors, individuals with disabilities, and the general public.
Operating Hours:	24 hours a day/7 days a week.
Priority Call System:	Reservations take priority, then first come, first served.
Fees/Suggested Donation:	Fees based on trip. Standard with wheelchair - \$50 round trip; car with no wheelchair - \$30-\$45 round trip.
Program Funding Sources:	Private Pay.
Drivers and Escorts:	12 on staff.
Service Restrictions:	Wheelchair lift will only accommodate chairs up to 29 ½ inches wide. 24-hour notice needed.

Activity Center Maps



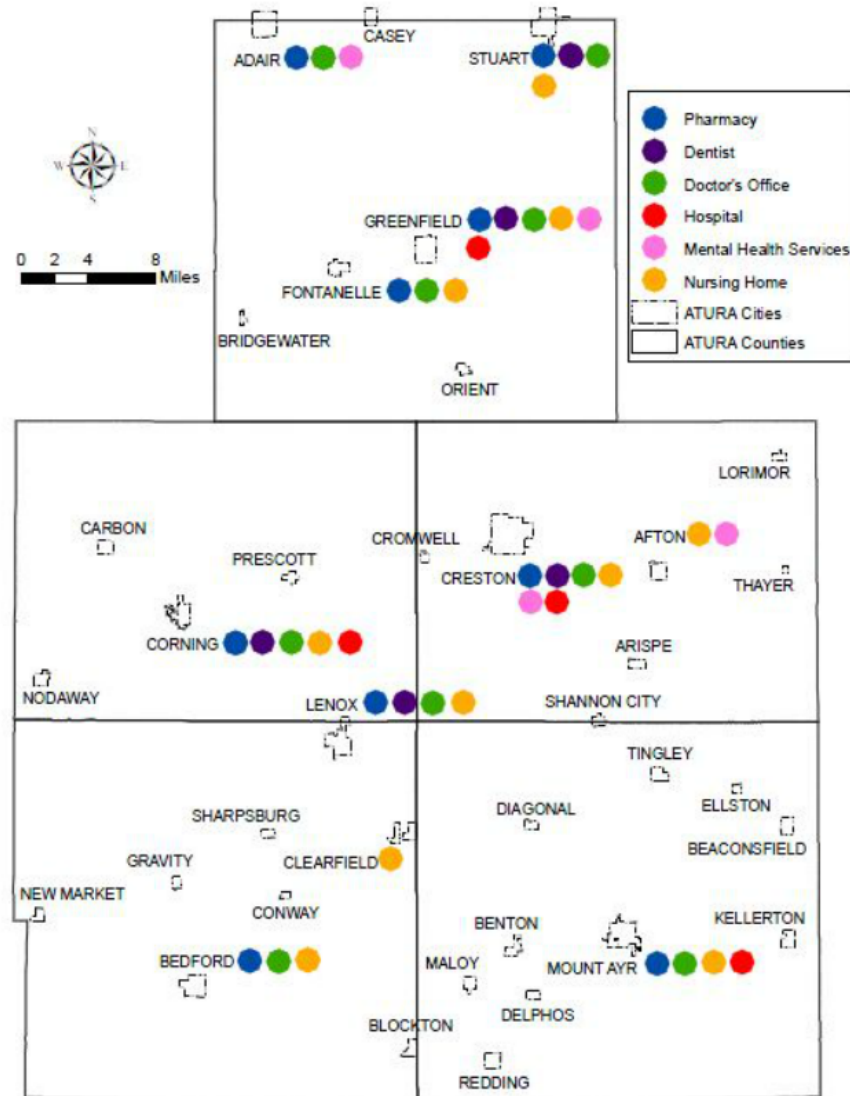
Activity Center Maps



Activity Center Maps

RPA 14

Locations of Medical Services in the Region



Activity Center Maps

RPA 16

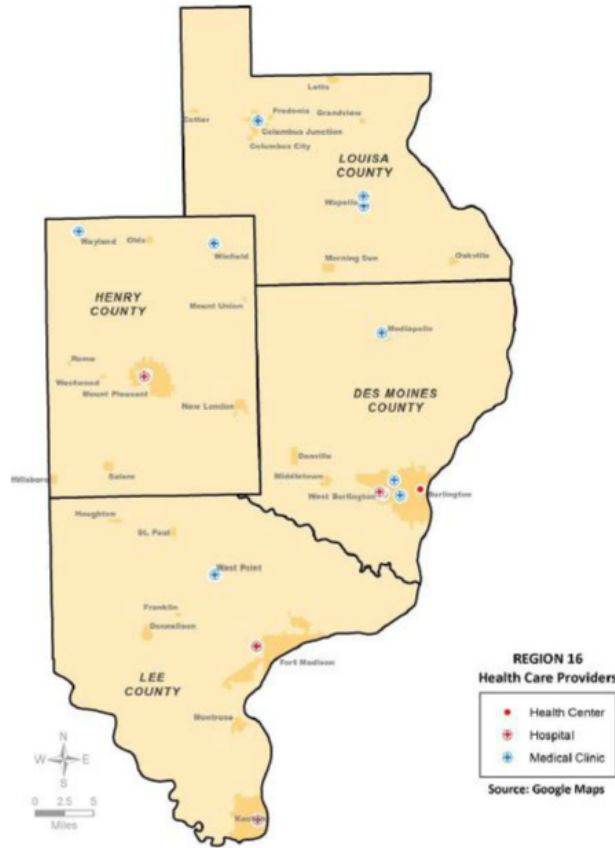


Figure 3.22

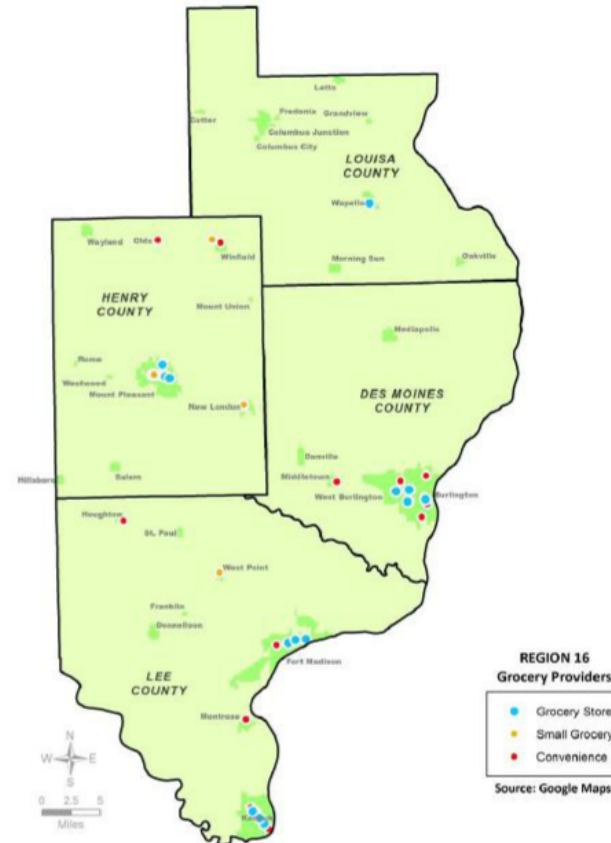
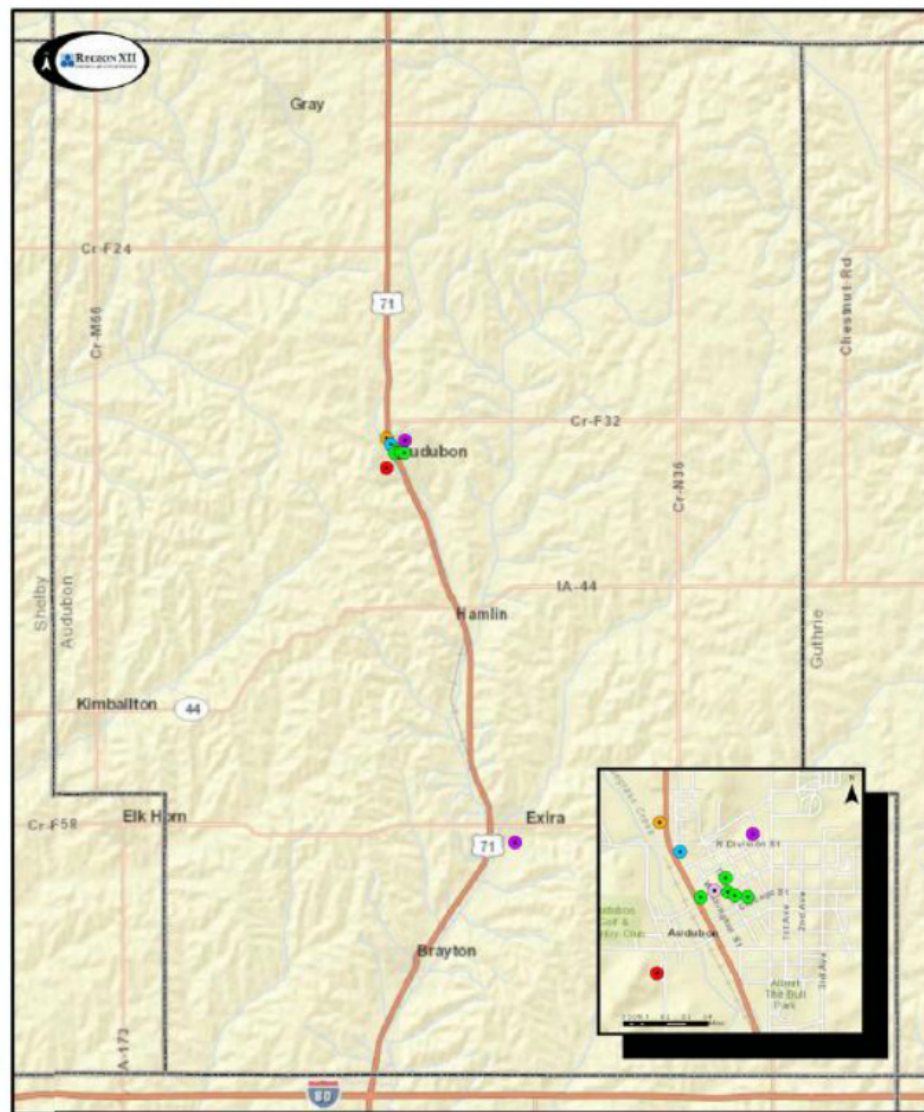


Figure 3.23

Activity Center Maps

RPA 12

Map 2.9: Audubon County Service Centers

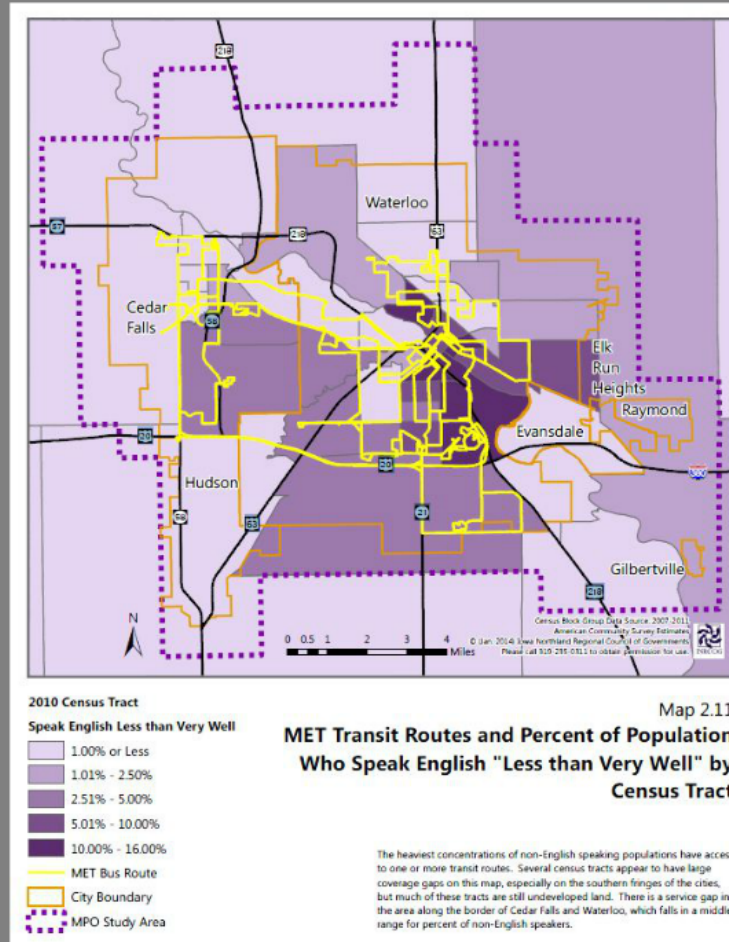


Audubon County Transit Trip Generators

- Multiple Retail Services
- Bank
- Clinic
- Grocery
- Hospital
- Nursing Home
- Pharmacy

LEP Analysis

INRCOG/RPA 7



LEP Analysis

MPO JC

- Percentage of population
- University of Iowa
International students and scholars
- Iowa City School District
 - English learning services

LEP Analysis

Ames

Critical Service	Explanation	Importance
Schedule/Timetable	Map, Routes, Timetables (Available via print or website)	Extremely Important
Detour Information	Changes to routing or bus stop closures (Available via website, closed stops & temporary bus stops)	Extremely Important
What's New Information	Changes to CyRide's policy, new service route, events, public meetings, etc	Very Important
Fares Information	How much to ride CyRide	Very Important Students ride free with ISU ID;
Pass Sales Outlet Information	Where to obtain passes/tickets.	Very Important
ADA Brochure (online & printed)	Complimentary ADA Service	Very Important
ADA Application Form (online & printed)	How to apply for complimentary ADA Service	Very Important
Title VI Complaint Process & Online Form	Ability to file Civil Rights complaints with CyRide, FTA or City.	Very Important
Public Meetings	Verbal Interpretation	Very Important

- Definition of Safe Harbor
- Identified LEP groups within the community
- Assessment of services critical to translation and level of importance.

Critical Service	Explanation	Importance
Schedule/Timetable	Map, Routes, Timetables (Available via print or website)	Extremely Important
Detour Information	Changes to routing or bus stop closures (Available via website, closed stops & temporary bus stops)	Extremely Important
What's New Information	Changes to CyRide's policy, new service route, events, public meetings, etc	Very Important
Fares Information	How much to ride CyRide	Very Important Students ride free with ISU ID;
Pass Sales Outlet Information	Where to obtain passes/tickets.	Very Important
ADA Brochure (online & printed)	Complimentary ADA Service	Very Important
ADA Application Form (online & printed)	How to apply for complimentary ADA Service	Very Important
Title VI Complaint Process & Online Form	Ability to file Civil Rights complaints with CyRide, FTA or City.	Very Important
Public Meetings	Verbal Interpretation	Very Important

Coordination Issues (Analysis)

Des Moines MPO/CIRTPA

- Public Input Strategies
 - Mobility Matters Workshops
 - Coordinated Passenger Transportation Study
- Mobility Matters Workshop
 - Yearly gathering of mobility coordinators, human service agencies, transit agencies, transportation providers, medical providers, and advocacy groups
 - Highlights innovative projects and service providers in the local area and across the state.
- Coordinated Passenger Transportation Study
 - Grant funded opportunity pursued by TAG group
 - Included many focus groups with Older adults, Individuals with disabilities, Refugees, Homeless
 - Included a transportation provider survey and a transportation needs survey distributed widely to the public.

Coordination Issues (Analysis)

INRCOG/RPA 7

- Inputs to Section/Plan
 - A transit providers group that meets monthly to discuss coordination issues
 - The Bremer County Accessible Transportation Coalition
 - A public input survey from their LRTP
 - A separate passenger transportation provider survey for the PTP effort.
- Clearly delineated section documenting the status of previous priorities and strategies
- Breakdown of major themes and developments related to coordination, supplemented with descriptions of how they affect coordination.
 - Regulations-Charter
 - Medicaid Brokerage
 - Mental Health Services Restructuring
 - Area Agency on Aging Restructuring
 - Complete Streets and Transit Infrastructure
 - ***Technology****

Priorities and Strategies

Bi-State/RPA 9

- Priorities and strategies are guided by a vision statement and align with needs identified through public input.
- Priorities are listed, with strategies to achieve those priorities outlined.
- ***Land use patterns are included within the strategies.****

- **Land Use:** Land use patterns that support mobility choices and encourage proximity to services are preferred. Land use patterns may be improved by:
 1. Coordinating development between transit operators and the economic development community prior to construction
 2. Strengthening relationships between private developers and transit operators
 3. Increasing public input opportunities throughout the economic development process

*use patterns are included with strategies.**

- **Land Use:** Land use patterns that support mobility choices and encourage proximity to services are preferred. Land use patterns may be improved by:
 1. Coordinating development between transit operators and the economic development community prior to construction
 2. Strengthening relationships between private developers and transit operators
 3. Increasing public input opportunities throughout the economic development process

Priorities and Strategies

SIMPCO/RPA 4

E. Lower the overall cost of public transportation and increase the efficiency of public transportation by utilizing the most current technology available.

The cost of transportation continues to be an area of concern when talking to health/human service providers. Utilizing Intelligent Transportation Systems (ITS) and other new technology can improve the efficiency of transit system which can overall lower the cost to riders.

Unmet need/barrier this priority could address:

- Information on available transportation options
- Affordable transportation
- Too many disconnects between districts/agencies
- Demand greater than services available
- The cost of fuel

Potential Projects:

- Utilize ITS for fare collection, passenger counts, and other data collection.
- Provide the latest in technology on buses and on public transit property in terms of security
- Continue to fund the Mobility Manager that would provide greater access to funding, create a more cost-effective use of resources, reduce duplication and overlap in human service agency transportation services; fill service gaps within the community & geographic service area; serve additional individuals within existing budgets; and provide centralized professional management of existing resources

Final May 2014

78

Possible Funding Sources:

- Urbanized Area Formula Program – Section 5307
- Enhanced Mobility of Senior and Individuals with Disabilities – Section 5310
- Formula for Rural Areas – Section 5311
- Bus and Bus Facilities formula grants – Section 5339



Funding

SIMPCO/RPA 4

Administration on Aging

- Grants for Supportive Services and Senior Centers
- Programs for American Indian, Alaskan Native, and Native Hawaiian Elders

Centers for Medicare and Medicaid

- Medicaid
- State Children's Health Insurance Program

Health Resources and Services Administration

- Community Health Centers
- Healthy Communities Program
- HIV Care Formula
- Rural Health Care Network
- Rural Health Care Outreach Program
- Healthy Start Initiative
- Maternal and Child Services Grants
- Ryan White CARE Act Program

Substance Abuse Mental Health Service Administration

- Community Mental Health Service Block Grant

Funding MAPA

Appendix A: Federal Programs

Agency & Program	FY2010 Funding (% transportation amount, if known)	Primary Target Population	Who are the main direct recipients of Federal funds?	Statewide and/or Metropolitan (or equiv) Planning?	Is Mobility Management Eligible?	Can One-Call Services be Funded?	Can Transit Fares/Vouchers be Purchased?	Can Vehicles be Purchased?
<p>Developmental Disabilities Basic Support and Advocacy Grants (State Councils on Developmental Disabilities and Protection and Advocacy Grants) http://www.acf.hhs.gov/programs/add/addprogr_am.html Developmental Disabilities Projects of National Significance http://www.acf.hhs.gov/programs/add/pns/pns_h.html The Administration on Developmental Disabilities (ADD) provides formula-based grants to state agencies serving the developmentally disabled, and awards discretionary grants for demonstrations and special projects that address the unique needs of those with developmental disabilities also. Among the activities supported through these various grants are employment, training and housing-related services. Transportation often figures into ADD-funded projects and services.</p>	\$130M	D	States	State	Y	Y	N	N
<p>Temporary Assistance to Needy Families http://www.acf.hhs.gov/programs/ofa/tanf/index.html States receive these formula grants, known as TANF, to provide cash assistance, work opportunities, and necessary support services for needy families with children. States may choose to spend some of their TANF funds on transportation and related services needed by program beneficiaries.</p>	\$16.5B Transport: \$355.3m	L	States	State	Y	N	Y	N
<p>Community Services Block Grant http://www.acf.hhs.gov/programs/ocs/csbgr/index.html Under this family of programs, states and tribes receive funding to provide a broad range of services for low-income persons. Most of the funds in this set of programs are awarded as formula-based grants to states, which pass them on to local community action programs. An important component of these community services programs is the Job Opportunities for Low-income Individuals (JOLI) program, through which the federal Office of Community Services awards discretionary grants to local non-profits who are creating employment and business opportunities for welfare recipients and other low-income individuals. Transportation services are commonly provided in both the block grant and JOLI programs.</p>	\$700M	L	States	N	Y	Y	Y	Y
<p>Transitional Living Program for Older Homeless Youth http://www.acf.hhs.gov/programs/fysb/content/youthdivision/programs/tlpdfactsheet.htm The Transitional Living Program provides competitive grants to support projects that provide long-term residential services to homeless youth ages 16-21. The services offered are designed to help young people who are homeless make a successful transition to self-sufficient living. Transitional living programs are required to provide youth with stable, safe living accommodations, and services – sometimes</p>	\$39M	Y	Local entities	N	N	N	Y	N

5310 Notation

- Projects must be *specifically* noted to know what exactly you are spending money on, but general enough to allow for flexibility.
- List projects by federal fiscal year they are planned.
- Ex. 2015-2019, Project/FY 2015, Project/FY 2016 etc.
- Since projects must be derived and noted in the plan, make sure you are noting, revising, and amending properly.